

2915 ELLWOOD AVENUE

RICHMOND, VA 23221

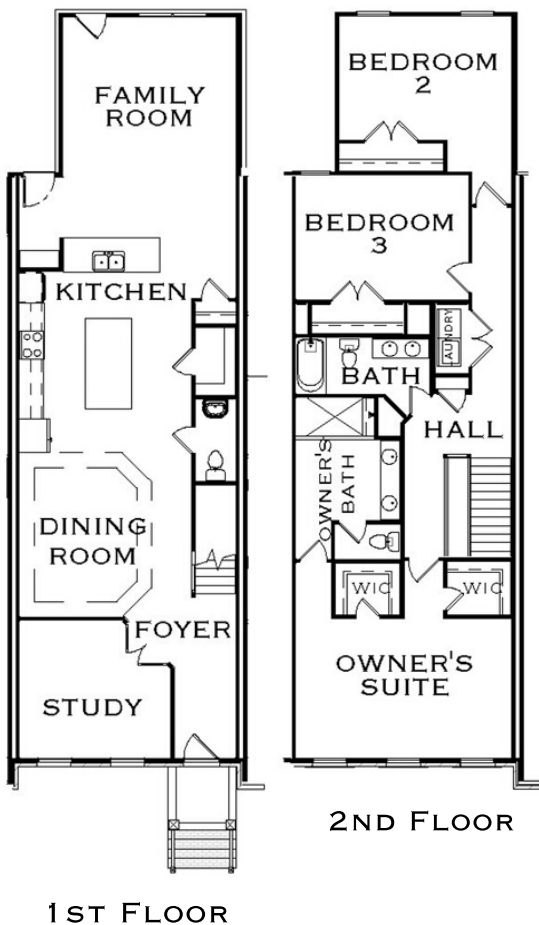
\$699,950



RICHMOND HILL

DESIGN + BUILD

- 3 BEDROOMS
- 2.5 BATHROOMS
- BRIGHT, OPEN FLOOR PLAN
- 10 FT. FIRST FLOOR AND 9 FT. SECOND FLOOR CEILINGS
- 2-CAR, DEDICATED PARKING



THE FINCHLEY - B

FIRST FLOOR SQ. FT. – 1,264

SECOND FLOOR SQ. FT. – 1,264

TOTAL SQUARE FOOTAGE – 2,528

CALL LLOYD POE AT 804.400.3649
OR E-MAIL LPOE@RHILLBUILDS.COM

