

# 2917 ELLWOOD AVENUE

RICHMOND, VA 23221

\$724,950



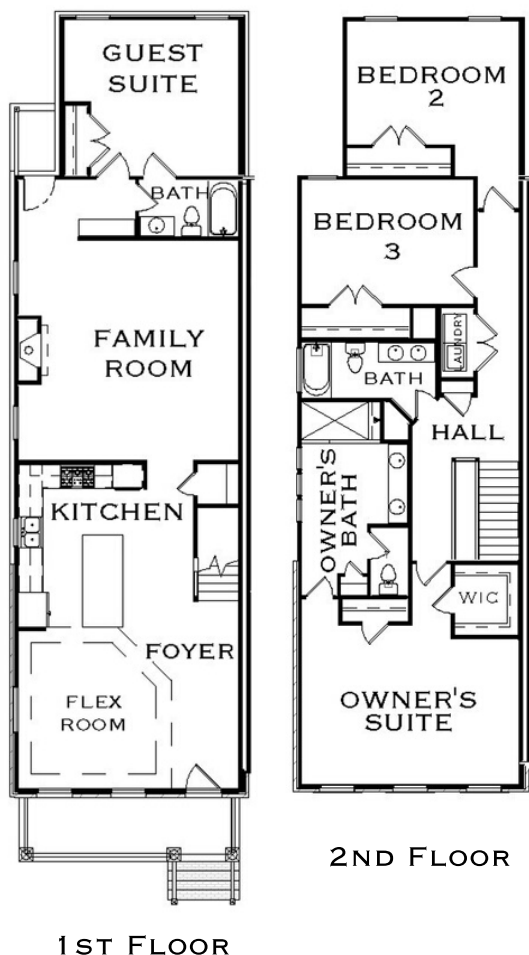
**RICHMOND HILL**

DESIGN + BUILD

- 4 BEDROOMS
- 3 BATHROOMS
- BRIGHT, OPEN FLOOR PLAN
- FIRST FLOOR GUEST SUITE
- 10 FT. FIRST FLOOR AND 9 FT. SECOND FLOOR CEILINGS
- 2-CAR, DEDICATED PARKING



(PICTURE IS OF 2913 ELLWOOD AVENUE, BUT HAS THE SAME ELEVATION)



## THE FINCHLEY - A

FIRST FLOOR SQ. FT. — 1,304

SECOND FLOOR SQ. FT. — 1,304

TOTAL SQUARE FOOTAGE — 2,608

CALL LLOYD POE AT 804.400.3649  
OR E-MAIL [LPOE@RHILLBUILDS.COM](mailto:LPOE@RHILLBUILDS.COM)

